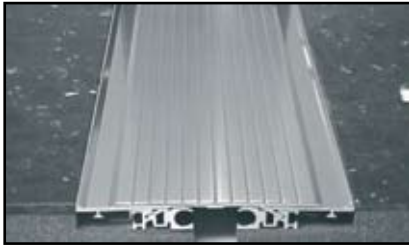


WABO SEISMICFLOOR®

Juntas de expansión para pisos

Descripción	Beneficios	Usos Recomendados
<p>WABO SEISMICFLOOR es capaz de acomodar movimientos térmicos y sísmicos multidireccionales. Los modelos “FJC” y “FXB” son sistemas de juntas confiables de gran durabilidad para pisos interiores sujetos a tráfico peatonal y de cierto tipo de carritos ligeros. Estos sistemas pueden ser suministrados con cubiertas que cumplen con las regulaciones establecidas por la ADA. Todos los modelos utilizan elementos y cubiertas de aluminio.</p>	<ul style="list-style-type: none"> • Los componentes del sistema son universales entre sí, ofreciendo una amplia gama de soluciones para diversas condiciones de operación. • Soportan movimientos sísmicos multidireccionales. • Diseñadas especialmente para tránsito peatonal libre de riesgos. • Mantenimiento sencillo y facilidad de ensamblaje. • Diseñadas para uso rudo. 	<ul style="list-style-type: none"> • Aeropuertos • Bancos • Casinos • Centros de convenciones • Cortes • Hospitales • Hoteles • Museos • Oficinas • Puentes peatonales interiores • Prisiones • Escuelas • Centros comerciales • Cines y teatros
<h3>Presentación</h3>		
<ul style="list-style-type: none"> • Los perfiles de aluminio se empacan en tramos de 10 pies. • Todos los accesorios se envían en los empaques originales del fabricante. 		
<h3>Propiedades Físicas</h3>		
<ul style="list-style-type: none"> • Perfiles de aluminio: 	<p>ASTM B209, aleación 6061-T6 ó 5052-H32</p>	
<ul style="list-style-type: none"> • Extruídos de aluminio: 	<p>ASTM B221, aleación 6005-T6 ó 6063-T5</p>	
<ul style="list-style-type: none"> • Superficies expuestas: 	<p>Aluminio estriado o cepillado, dependiendo del tipo de placa y el tamaño del modelo.</p>	
<ul style="list-style-type: none"> • Barrera de vapor (opcional): 	<p>Hojas de vinil transparente reforzado en espesor mínimo de 26 milésimas de pulgada</p>	
<ul style="list-style-type: none"> • Barra de centrado sísmico: 	<p>Componentes de nylon resistente a la corrosión con extremos esféricos.</p>	





Tablas de movimiento

Tabla de movimiento

Modelo	Abertura "A"		Ancho del sistema		Movimiento total	
	pulg.	mm	pulg.	mm	pulg.	mm
FJX-200	2.0	51	6.25	159	2.0	51
FJX-400	4.0	102	10.38	264	5.0	127
FJX-600	6.0	152	13.75	349	8.0	203
FJX-800	8.0	203	15.75	400	11.0	279
FJX-1000	10.0	254	18.75	476	14.0	356
FJX-1200	12.0	305	21.75	552	17.0	432
FJX-1800	18.0	457	31.75	806	26.0	660
FJX-2400	24.0	610	40.75	1035	35.0	889
FJX-200C	2.0	51	3.88	98	1.5	38
FJX-400C	4.0	102	7.19	183	4.0	102
FJX-600C	6.0	152	9.88	251	6.5	165
FJX-800C	8.0	203	11.88	302	9.0	229
FJX-1000C	10.0	254	14.38	365	11.5	292
FJX-1200C	12.0	305	16.88	429	14.0	356
FJX-1800C	18.0	457	24.88	632	21.5	546
FJX-2400C	24.0	610	32.38	822	29.0	737

Tabla de movimiento

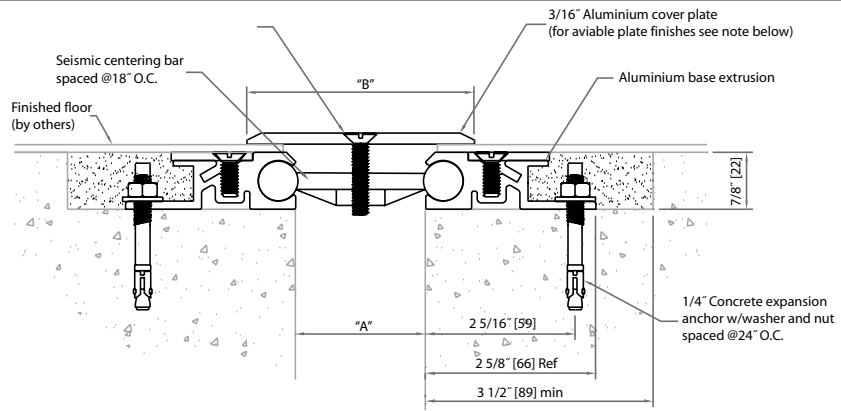
Modelo	Abertura "A"		Ancho del sistema		Movimiento total	
	pulg.	mm	pulg.	mm	pulg.	mm
FJG-200	2.0	51	5.75	146	2.0	51
FJG-400	4.0	102	10.38	264	5.0	127
FJG-600	6.0	152	13.75	349	8.0	203
FJG-800	8.0	203	15.75	400	11.0	279
FJG-1000	10.0	254	18.75	476	14.0	356
FJG-1200	12.0	305	21.75	552	17.0	432
FJG-1800	18.0	457	31.75	806	26.0	660
FJG-2400	24.0	610	40.75	1035	35.0	889
FJG-200C	2.0	51	3.88	98	1.5	38
FJG-400C	4.0	102	7.19	183	4.0	102
FJG-600C	6.0	152	9.88	251	6.5	165
FJG-800C	8.0	203	11.88	302	9.0	229
FJG-1000C	10.0	254	14.38	365	11.5	292
FJG-1200C	12.0	305	16.88	429	14.0	356
FJG-1800C	18.0	457	24.88	632	21.5	546
FJG-2400C	24.0	610	32.38	822	29.0	737

Tabla de movimiento

Modelo	Abertura "A"		Ancho del sistema		Movimiento total	
	pulg.	mm	pulg.	mm	pulg.	mm
FXB-400	4.0	102	6.5	165	5.0	127
FXB-600	6.0	152	9.5	241	8.0	203
FXB-800	8.0	203	12.5	318	11.0	279
FXB-1000	10.0	254	15.5	394	14.0	356
FXB-1200	12.0	305	18.5	470	17.0	432
FXB-1800	18.0	457	27.5	699	26.0	660
FXE-400	4.0	102	6.5	165	4.0	102
FXE-600	6.0	152	9.5	241	7.0	178
FXE-800	8.0	203	12.5	318	10.0	254
FXE-1000	10.0	254	15.5	394	13.0	330
FXE-1200	12.0	305	18.5	470	16.0	406
FXE-1800	18.0	457	27.5	699	25.0	635

Tabla de movimiento

Modelo	Abertura "A"		Ancho del sistema		Movimiento total	
	pulg.	mm	pulg.	mm	pulg.	mm
FJC-200	2.0	51	3.50	89	2.0	51
FJC-400	4.0	102	6.50	165	5.0	127
FJC-600	6.0	152	9.50	241	8.0	203
FJC-800	8.0	203	12.50	318	11.0	279
FJC-1000	10.0	254	15.50	394	14.0	356
FJC-1200	12.0	305	18.50	470	17.0	432
FJC-1800	18.0	457	27.50	699	26.0	660
FJC-2400	24.0	610	36.50	927	35.0	889
FJC-200C	2.0	51	2.75	70	1.5	38
FJC-400C	4.0	102	5.25	133	4.0	102
FJC-600C	6.0	152	7.75	197	6.5	165
FJC-800C	8.0	203	10.25	260	9.0	229
FJC-1000C	10.0	254	12.75	324	11.5	292
FJC-1200C	12.0	305	15.25	387	14.0	356
FJC-1800C	18.0	457	22.75	578	21.5	546
FJC-2400C	24.0	610	30.25	768	29.0	737



FJC-200 thru FJC-2400 detail
Floor to Floor condition

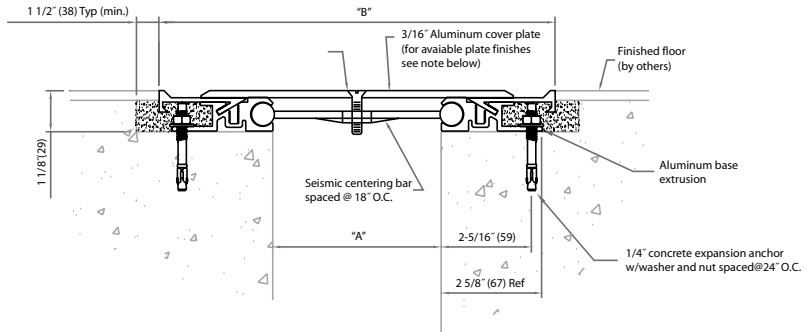
note: Exposed Surface

- For openings up to 6"
 - Plate supplied with grooved surface / mill finish
- For openings greater than 6"
 - Plate Supplied with brush finish
- Grooves optional for plates up to 24" in width
- For plates over 24" contact WBA for available finishes.

Dimension chart

Model	"A"@Min.	"A"@Mid	"A"@Max	"B"	Total movement
FJC-200	1" (25)	2" (51)	3" (76)	3 1/2" (89)	2" (51)
FJC-400	1" (25)	4" (102)	6" (152)	6 1/2" (165)	5" (127)
FJC-600	1" (25)	6" (152)	9" (229)	9 1/2" (241)	8" (203)
FJC-800	1" (25)	8" (203)	12" (305)	12 1/2" (317)	11" (279)
FJC-1000	1" (25)	10" (254)	15" (381)	15 1/2" (394)	14" (356)
FJC-1200	1" (25)	12" (305)	18" (457)	18 1/2" (470)	17" (432)
FJC-1800	1" (25)	18" (457)	27" (686)	27 1/2" (699)	26" (660)
FJC-2400	1" (25)	24" (607)	36" (914)	36 1/2" (927)	35" (889)

Note: Minimum and maximum values are after movement occurs. Mid point value is the recommended size of opening at installation



FJG-400 thru FJG-2400 detail
floor to floor condition

note: exposed surface

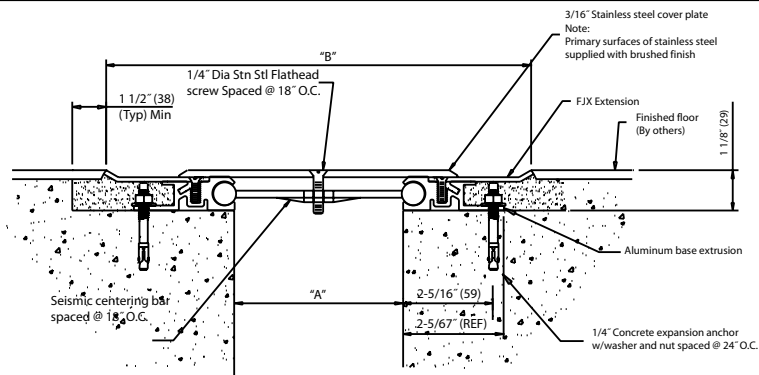
- For openings up to 6"
 - Plate supplied with grooved surface/mill finish
- For openings greater than 6"
 - Plate supplied with brush finish
- Grooves optional for plates up to 24" in width
- For plates over 24" contact WBA for available finishes.

Dimension chart

Model	"A"@Min.	"A"@Mid	"A"@Max	"B"	Total movement
FJG-400	1" (25)	4" (102)	6" (152)	10 3/8" (264)	5" (127)
FJG-600	1" (25)	6" (152)	9" (229)	13 3/4" (349)	8" (203)
FJG-800	1" (25)	8" (203)	12" (305)	15 3/4" (400)	11" (279)
FJG-1000	1" (25)	10" (254)	15" (381)	18 3/4" (476)	14" (356)
FJG-1200	1" (25)	12" (305)	18" (457)	21 3/4" (552)	17" (432)
FJG-1800	1" (25)	18" (457)	27" (686)	31 3/4" (806)	26" (660)
FJG-2400	1" (25)	24" (607)	36" (914)	40 3/4" (1035)	35" (889)

Note: Minimum and maximum values are after movement occurs. Mid point value is the recommended size of opening at installation.

() - denotes millimeters

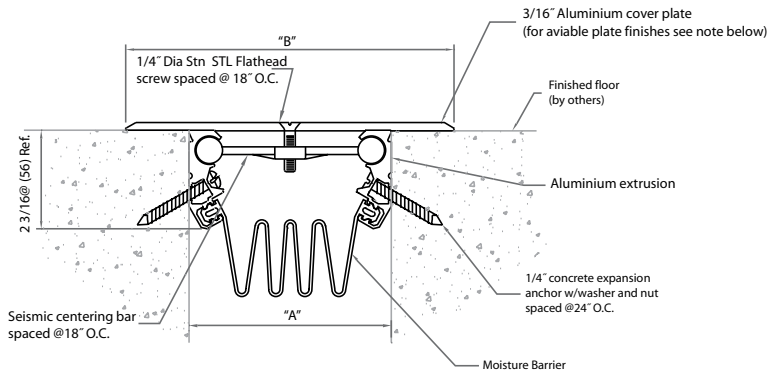


FJX-400 Thru FJX-2400 Detail
Floor to floor condition

Dimension chart

Model	"A"@Min.	"A"@Mid	"A"@Max	"B"	Total movement
FJX-400	1 (25)	4 (102)	6 (152)	10 3/8 (264)	5 (127)
FJX-600	1 (25)	6 (152)	9 (229)	13 3/4 (349)	8 (203)
FCX-800	1 (25)	8 (203)	12 (305)	15 3/4 (400)	11 (279)
FCX-1000	1 (25)	10 (254)	15 (381)	18 3/4 (476)	14 (356)
FCX-1200	1 (25)	12 (305)	18 (457)	21 3/4 (552)	17 (432)
FCX-1800	1 (25)	18 (457)	27 (686)	31 3/4 (806)	26 (660)
FCX-2400	1 (25)	24 (607)	36 (914)	40 3/4 (1035)	35 (889)

Note: Minimum and maximum values are after movement occurs. Mid point value is the recommended size of opening at installation.
() - denotes millimeters



FXE-400 Thru FXE-1800 Detail
Floor to floor condition

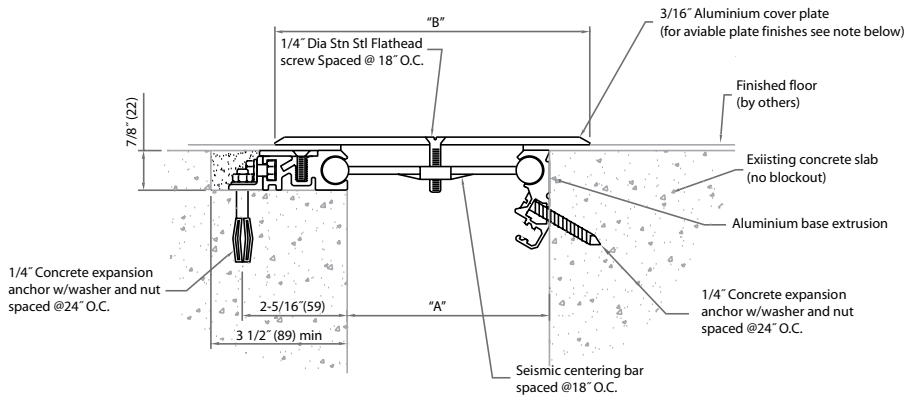
note: "A" Exposed Surface

- For openings up to 6"
 - Plate supplied with grooved surface / mill finish
- For openings greater than 6"
 - Plate Supplied with brush finish
 - Grooves optional for plates up to 24" in width
 - For plates over 24" contact BASF for available finishes.

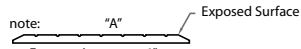
Dimension chart

Model	"A"@Min.	"A"@Mid	"A"@Max	"B"	Total movement
FXE-400	2 (25)	4 (102)	6 (152)	6 1/2 (165)	4 (102)
FXE-600	2 (25)	6 (152)	9 (229)	9 1/2 (241)	7 (178)
FXE-800	2 (25)	8 (203)	12 (305)	12 1/2 (317)	10 (254)
FXE-1000	2 (25)	10 (254)	15 (381)	15 1/2 (394)	13 (330)
FXE-1200	2 (25)	12 (305)	18 (457)	18 1/2 (470)	16 (406)
FXE-1800	2 (25)	18 (457)	27 (686)	27 1/2 (699)	25 (635)

Note: Minimum and maximum values are after movement occurs. Mid point value is the recommended size of opening at installation
() - denotes millimeters



FXB-400 thru FXB-1800 detail
Floor to Floor condition



- For openings up to 6"
 - Plate supplied with grooved surface / mill finish
- For openings greater than 6"
 - Plate Supplied with brush finish
 - Grooves optional for plates up to 24" in width
 - For plates over 24" contact WBA for available finishes.

Dimension chart

Model	"A"@Min.	"A"@Mid	"A"@Max	"B"	Total movement
FJC-400	1"(25)	4"(102)	6"(152)	6 1/2"(165)	5"(127)
FJC-600	1"(25)	6"(152)	9"(229)	9 1/2"(241)	8"(203)
FJC-800	1"(25)	8"(203)	12"(305)	12 1/2"(317)	11"(279)
FJC-1000	1"(25)	10"(254)	15"(381)	15 1/2"(394)	14"(356)
FJC-1200	1"(25)	12"(305)	18"(457)	18 1/2"(470)	17"(432)
FJC-1800	1"(25)	18"(457)	27"(686)	27 1/2"(699)	26"(660)

Note: Minimum and maximum values are after movement occurs. Mid point value is the recommended size of opening at installation.
 () - denotes millimeters