

## WABOCRETE MEMBRANE®

Sistemas de juntas de expansión  
de las series MM/ME

### Descripción

WABOCRETE MEMBRANE, el primer sistema de concreto elastomérico de la industria, es un ensamblaje sellador de alto rendimiento que está diseñado específicamente para satisfacer las exclusivas demandas de las estructuras de estacionamientos. WABOCRETE MEMBRANE combina una selección de casquillos elastoméricos adaptables con patrones de orificios en el área de la brida para facilitar la sujeción mecánica al cabezal elastomérico WABOCRETE II. Este cabezal tenaz y duradero se flexiona bajo carga e impide la entrada de humedad.



### Beneficios

- Control de expansión estanco: tolera movimientos en varias direcciones
- Elementos de sellado continuo
- El cabezal WABO® CRETE II proporciona una superficie con capacidad de absorción de energía
- Adaptable a cambios multidireccionales en el diseño de la junta de expansión
- Instalado por aplicadores certificados
- Transiciones horizontales disponibles en fábrica
- Rendimiento comprobado en quince años de instalaciones exitosas

### Usos recomendados

- Construcciones nuevas o rehabilitación de estructuras de estacionamiento
- Aplicaciones con movimientos hasta de 100 mm (4 pulg.)
- Estructuras que requieren hermeticidad al agua
- Áreas sometidas a barrida y paleado de nieve

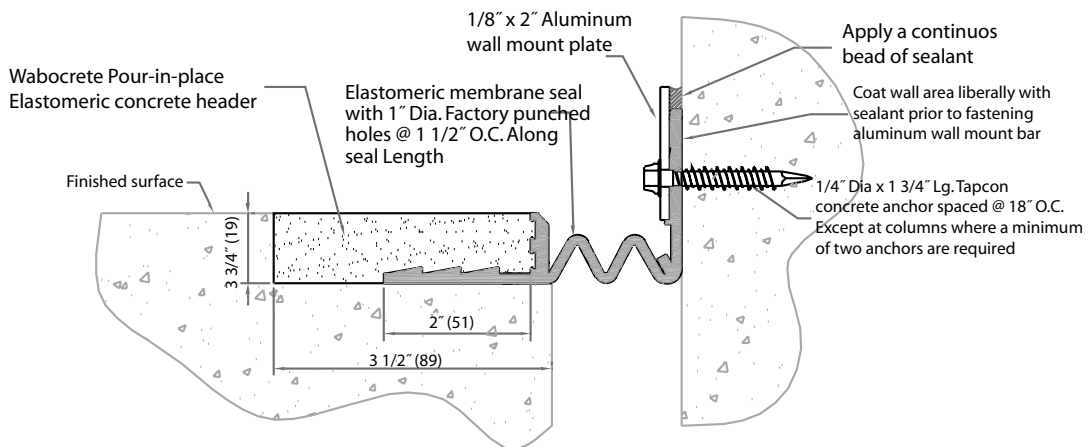
### Propiedades físicas (membrana) Material: Caucho termoplástico

Propiedades físicas	Método de ensayo ASTM	Requisitos
Dureza tipo A	D 2240	73 +/-3
Resistencia a la tracción	D 412	8,5 MPa (1230 psi)
Elongación de ruptura	D 412	460 %
Módulo al 100 %	D 412	3,6 MPa (520 psi)
Resistencia al desgarramiento	D 624 (159 lb/pulg.)	2840 kg/m
Deformación remanente por tracción	D 412	14 %
Punto de fragilidad	D 746	-60 °C (-76 °F)


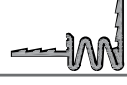

## Tablas de Movimiento

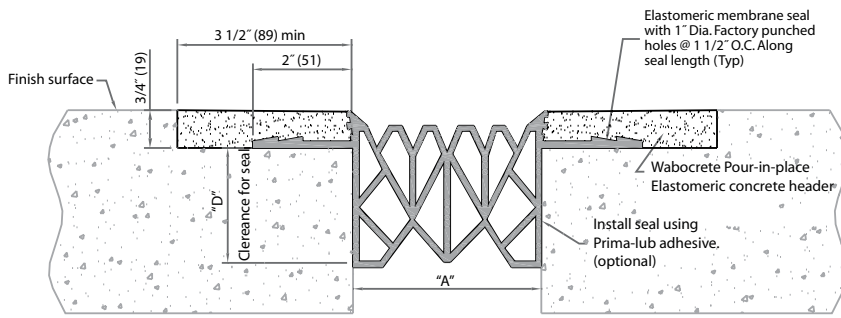
Model	Minimum J.O.		Maximum J.O.		Total Movement		Installation Width (midrange)		Minimum Installation Width		
	inches	mm	inches	mm	inch	mm	inches	mm	inch	m	m
Mm-150	1/2	13	2 1/2	64	2	51	1 1/2	38	1 1/2	3	8
Mm-200	13/16	21	4	102	3	3/16	81	2 1/2	64	2	5 1
Me-225	3/4	19	2	51	1 1/4	32	1 3/8	35	1 1/4	32	
Me-300	1 7/16	37	2 3/4	70	1 5/16	33	2 1/8	54	1 11/16	43	
Me-400	1 1/4	32	3 3/4	95	2 1/2	64	2 1/2	64	2 1/4	57	
Me-500	1 7/16	37	4 3/4	121	3 5/16	84	3 1/8	79	2 7/8	73	
Me-600	1 3/4	44	5 3/4	146	4	102	3 3/4	95	3 1/2	89	

138



\* (Standard black santoprene seal)

Profile	System	P/n
	MM-150C	8939
	MM-200C	8953
	MM-800C	8955



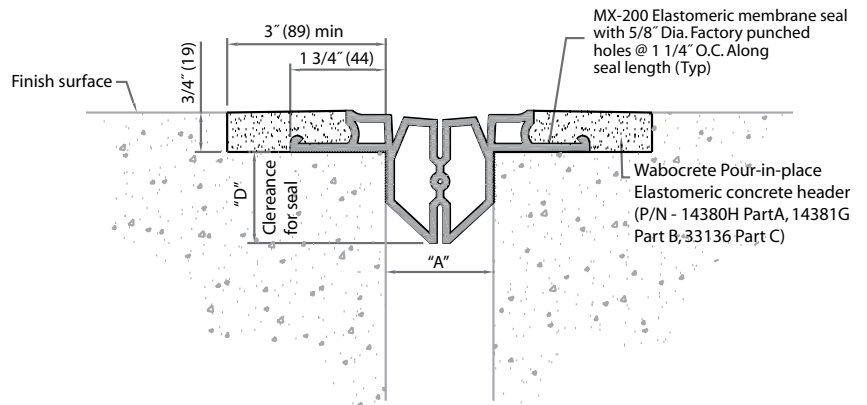
Dimension Chart

Model	*Part number	"A" @ Min	"A" @ Mid	"A" @ Max	Total movement	"D"	Shear Movement
ME-400	8883	1 1/2 (38)	2 1/2 (64)	4 (102)	2 1/2 (64)	2 5/8 (67)	±2 (51)

\* (Standard black santoprene seal)  
 Note: Minimum and maximum values are after movement occurs.  
 Mid point value is the recommended size of the opening at installation.  
 ( ) - Denotes millimeters

**Design Features**

- Factory horizontal transitions available.
- Installed through a factory trained and approved applicator network. Backed by a watertight warranty.
- 201 membrane is ADA compatible.
- Recommended for new installations and Retrofit projects.
- 15 year history of success.
- Offers rapid project turnaround coupled with durability and versatility.
- Resistant to ultra-violet rays and most chemicals.
- Accommodates multi-directional movement.



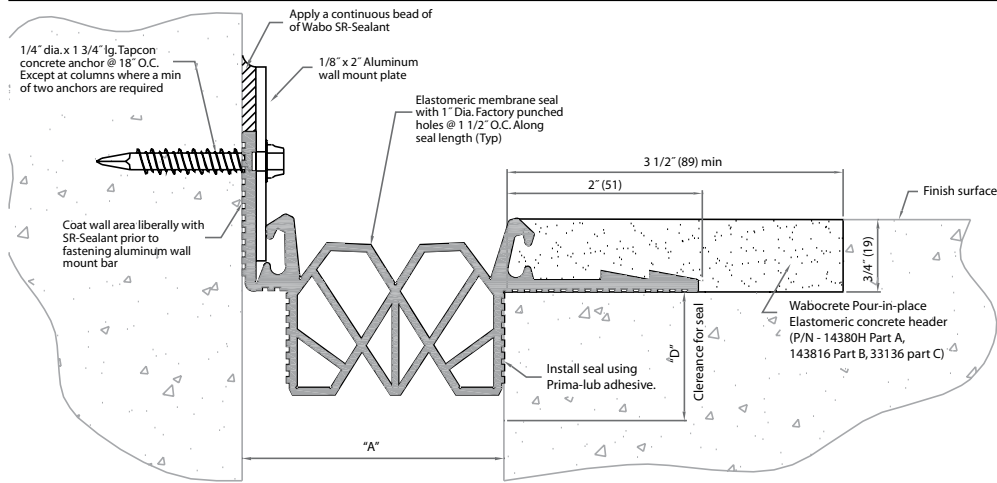
Dimension Chart

Model	*Part number	"A" @ Min	"A" @ Mid	"A" @ Max	Total movement	"D"	Shear Movement
MX-200	9020	5/8 (16)	2 (51)	4 (102)	3 3/8 (86)	2 (51)	±1 (25)

\* (Standard black santoprene seal)  
 Note: Minimum and maximum values are after movement occurs.  
 Mid point value is the recommended size of the opening at installation.  
 ( ) - Denotes millimeters

**Design Features**

- Factory horizontal transitions available.
- Installed through a factory trained and approved applicator network. Backed by a watertight warranty.
- Resistant to ultra-violet rays and most chemicals.
- Recommended for new installations and Retrofit projects.
- Accommodates multi-directional movement.
- Two-cell web design allows for greater movement range.
- Easy and fast to install due to web design and reduced blockout size
- Flush profile design to minimize tripping hazard.
- Simplifies the heat welding of transitions and terminations



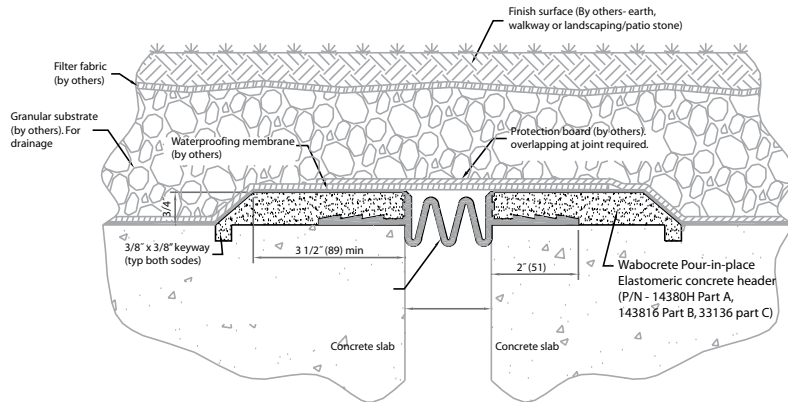
Dimension Chart

Model	*Part number	"A" @ Min	"A" @ Mid	"A" @ Max	Total movement	"D"
ME-225	8825	3/4" (19)	1 3/8" (35)	2 1/4" (57)	1 1/2" (38)	1 3/8" (35)
ME-300	8881	1 1/2" (38)	2 1/8" (54)	3" (76)	1 1/2" (38)	1 7/8" (48)
ME-400	8883	1 1/2" (38)	2 1/2" (64)	4" (102)	2 1/2" (64)	2 5/8" (67)
ME-500	8885	1 3/4" (44)	3 1/8" (79)	5" (127)	3 1/4" (83)	3 1/8" (79)
ME-600	8887	2" (51)	3 3/4" (95)	6" (152)	4" (102)	3 7/8" (98)

\* (Standard black santoprene seal)  
 Note: Minimum and maximum values are after movement occurs.  
 Mid point value is the recommended size of the opening at installation.  
 (.) - Denotes millimeters

Design Features

- Factory horizontal transitions available.
- Installed through a factory trained and approved applicator network. Backed by a watertight warranty.
- 201 membrane is ADA compatible.
- Recommended for new installations and Retrofit projects.
- 15 year history of success.
- Offers rapid project turnaround coupled with durability and versatility.
- Resistant to ultra-violet rays and most chemicals.
- Accommodates multi-directional movement.



Dimension Chart

Model	*Part number	"A" @ Min	"A" @ Mid	"A" @ Max	Total movement
ME-150	8939	1/2" (13)	1 1/2" (38)	2 1/2" (64)	2" (51)
ME-200	8953	3/4" (19)	2 1/2" (64)	4" (102)	3 1/4" (83)

\* (Standard black santoprene seal)  
 Note: Minimum and maximum values are after movement occurs.  
 Mid point value is the recommended size of the opening at installation.  
 (.) - Denotes millimeters

Design Features

- Factory horizontal transitions available.
- Installed through a factory trained and approved applicator network. Backed by a watertight warranty.
- Recommended for new installations and Retrofit projects.
- 15 year history of success.
- Offers rapid project turnaround coupled with durability and versatility.
- Accommodates multi-directional movement.
- Can continue and also transition into at-grade traffic applications